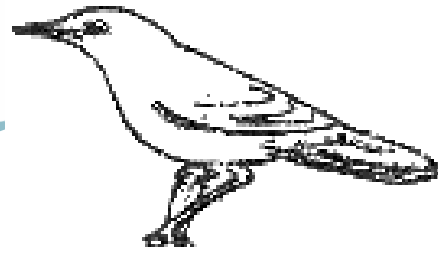


# Jan-Feb 2024

## Wetland Warbler



Clamorous Reed-Warbler

Number 188



Inside this issue:

Mural at Downs Community Farm	2
Join us	3
Student Visits	4
Frog Project	5

## Wetland Warbler

### POOR DUCKS AND FISH

The Allan Government's decision to allow duck hunting to continue despite its own Inquiry's clear recommendations to discontinue is disgraceful. .

This is an incomprehensible decision. All of us within the Victorian community have the right to believe that our government will act on clear recommendations from its own inquiry processes, so we have every right to feel deeply upset and angry that the Allan Government has chosen not to.

#### And another thing...

The Victorian Government is offering Grade 5 primary school students and all primary aged students at specialist schools, irrespective of their age, a free Little Angler Kit.

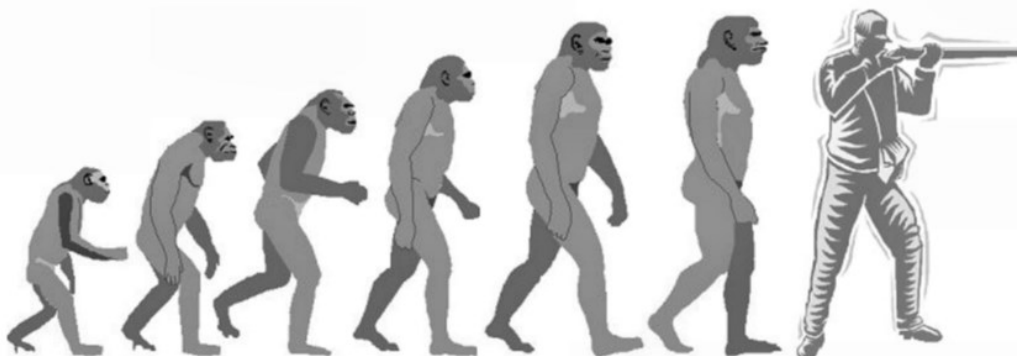
The Government is keen to get more children outside and active,

connecting with nature and enjoying time in the great outdoors. and in its 'wisdom' has decided fishing is a great way to do that.

What on Earth is the thinking here? By all means encourage children to get out in the open and engage in enjoyable activity, but fishing! Why not choose something else (eg kites), that doesn't involve the killing and maiming of our wildlife? What a waste of money! It's bad enough that ducks continue to be killed in their hundreds – now it is the turn of the fish!

We, as the dominant species with a capacity for empathy and ethics, need to vastly improve our relationship with our fellow creatures. Shooting at ducks and hauling fish out of water for sport is not the way!

One can only hope for karma.



Australopithecus

Homo Habilis

Homo Erectus

Homo Horribilis

#### FRIENDS OF EDITHVALE - SEAFORD WETLANDS INC.

Assoc No. A0017388A

ABN - 95 886 101 621

P O BOX 2031, EDITHVALE  
VIC 3196

[www.edithvale-seaford-wetlands.org](http://www.edithvale-seaford-wetlands.org)

<https://www.facebook.com/edithvaleseafordwetlands/>

**President** Cathy Smith  
0438 302 208

**Vice President** Robin Clarey  
0405 466 651

**Secretary** Margaret Hunter  
9587 0786

**Treasurer** Hilary Bray

**Committee**  
Rosalie Cooper  
Rex Chugg  
Peter Murphy

Nola Pitman  
Jaye Williams  
(Julie Stephens)

#### Seaford W/Bees

Rex Chugg 9766 6056  
Julie Stephens 0448 585 590

#### Bird Hide Roster

Robin Clarey 0405 466 651  
Nola Pitman

#### Guided Tours

Marg Hunter 9587 0786

#### Newsletter

Robin Clarey 9786 2213

#### Warbler Collator

Cheryl Meier 9772 4484

#### Membership Database

Simon Dalla Costa

#### Website

Rosalie Cooper 0409 388 066

John Cooper

#### Facebook

Alison Kuitert

Allan Broomhall

#### Instagram

Jaye Williams

# MURAL AT DOWNS COMMUNITY FARM



Guests on the day pose in front of the mural.

Birds: from left—Latham’s Snipe, Purple Swamphen, Golden-headed Cisticola, Sharp-tailed Sandpiper and Black-shouldered Kite.

**I**f you take a walk along the eastern path of Seaford Wetlands, closing in on the Eel Race Creek, you will see the stunning new mural on the back wall of the Down’s Community Farm’s (DCF) large Shed.

This project was a successful collaboration between Down’s Community Farm, Friends of Edithvale Seaford Wetlands Inc (FESWI), Jimmy Dvate (artist) and Frankston City Council, landowner and funder.

After 18 months of planning it was wonderful to finally see this mural showcasing five special species of birds, including the migratory ones

from Japan and Siberia; and some of the flora of the wetlands.

A celebration attended by about 60 people was held on January 19th, just before completion. Many thanks to FESWI’s Allan Broomhall for speaking to the group about the importance of the wetlands and the creatures that use it.

FESWI would like to acknowledge the generosity of the Down’s Community for choosing to use this blank canvas to showcase the wetlands instead, perhaps, of its own endeavours and achievements. So much appreciated!

(Information Source: DCF: Summer 2024 Newsletter)



Pink-eared Ducks

Photo: Allan Broomhall

## RECENT BIRDS AT EDITHVALE



Aust White Ibis on Edi island tree

Photo: Allan Broomhall

## WIN AN OVERSEAS HOLIDAY!!

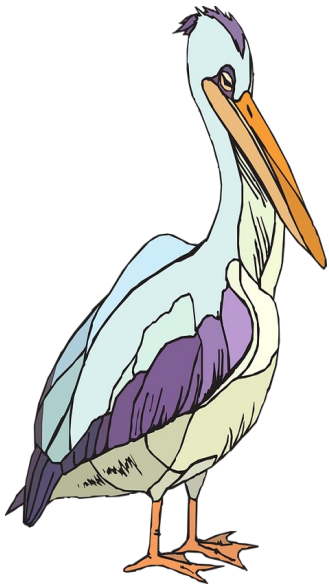
Dust off the computer and make a contribution to Wetland Warbler! It can be short or long (but not too long); an observation; an encounter with wildlife; an opinion; a suggestion. Give it a go! All contributions will be well received.

Send to the Editor at FESWI's email address:  
feswiwetlands@gmail.com

By the way – just kidding about winning an overseas trip, but send something in anyway!



## IMAGINE



Imagine a beautiful Autumn afternoon— pale blue sky, mellow sunshine, warm still air.

Imagine relaxing in an iconic building, over-looking an awesome view abundant with wildlife, as well as meeting up with like-minded people.

This could be all yours ..... all you have to do is volunteer to help out for two hours at the bird hide on the occasional weekend afternoon.

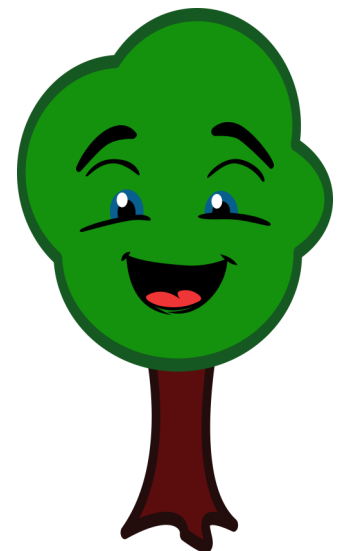
If you can't resist all this, email us at  
feswiwetlands@gmail.com to join the team.

## FROM PASTURE TO WOODLAND

Did you know that at least 85% of the buffer zone around Seaford Wetlands (previously 'empty' cow paddocks) was planted by the Friends over the past 25-30 years.

But there is still more work to be done! Join the Friend's working bee, first Sunday of each month (10:00am—12:00 noon), starting April.

Be one of the cool people. Email to  
feswiwetlands@gmail.com for more information.



# STUDENT VISITS

## Brentwood Secondary College

On 21<sup>st</sup> February (that horribly hot day!) 44 students from VCE Environmental Science and from Year 10 Environmental Science at Brentwood SC visited Edithvale Wetlands. They were interested in learning a little about the importance of the wetlands in both the natural and the urban world; the different animals that live there; and about the migratory birds that visit each summer.

The visit included a talk in the hide and a visit to the wetlands across the road. Despite the heat, which made concentration hard, these young people maintained interest, were outgoing and willing to engage.



## Holmesglen Institute



On 27<sup>th</sup> February FESWI hosted teacher, Tony, and seven students from Holmesglen Institute studying *Conservation and Ecosystem Management*. A course requirement was to visit different environmental sites to observe, identify and count (on this occasion the birds) the different species found there.

They seemed impressed with the hide and its close proximity to the water. After having a look around, they got straight to it – working co-operatively with other. As with a similar visit last October (different students) it was a pleasure to host this group.

.....

## PORT PHILLIP BAY COASTAL HAZARD ASSESSMENT

The full risk to homes, infrastructure and beaches all around Port Phillip Bay from sea level rise and storm surges linked to climate change has been revealed in confidential government studies that lay bare the multibillion-dollar challenges facing bayside communities and the environment.

Almost six years after the state government commissioned work on its Port Phillip Bay Coastal Hazard Assessment, it has finally released research that maps out the likely impacts on the 310-kilometre shoreline.

Further south, the inundation hazard increased tenfold to 4.4 square kilometres. Much of the increase would be around the Edithvale-Seaford Wetlands between Mordialloc Creek and the Patterson River, with the CSIRO concluding that with a 1.4-metre sea level rise, existing coastal protective structures would not be effective.

Link  
<https://todayspaper.smedia.com.au/theage/shared/ShowArticle.aspx?doc=AGE%2F2024%2F01%2F11&entity=Ar00303&sk=4A87CB3D&mode=text>



# WORLD LEADING FROG PROJECT

The world leading 'Frogld' project run by the Australian Museum in Sydney is a national frog count and one of the largest global citizen science projects. Australians have recorded 1 million amphibians, in their back yards as part of this project.

The project aims to create a database of species diversity, distribution and breeding habits of Aussie frogs to help understand how frogs and their ecosystems are responding to a changing planet. The Frogld's spatial coverage is up to 36.5% of continental Australia, and more than 45,000 citizen scientists have been involved in the project.

Frogs play a vital part in the environment and are known as bioindicators, which are used to assess the health of an ecosystem. By monitoring them we get a better understanding of our broader environmental health.

(Source: The Age 06/02/2024)

Our wetlands support five different species of frogs – the Pobblebonk, two Marsh Frogs (striped and spotted), the Southern Brown Tree Frog and the Common Froglet - many of which find their way into back gardens around the wetlands. At Seaford many frogs have been heard calling this spring and early summer, which is a good sign and lovely to hear.

## Did you know....

When frogs are sad, they feel very unhoppy.



Frogs love listening to hip-hop music.



Frogs are often happy because they eat whatever bugs them!



Pobblebonk Frog



Southern Brown Tree Frog



Striped Marsh Frog



Common Froglet



Spotted Marsh Frog

OUR FROGS

## Corporate Members

6

Following is a list of our corporate members. Please give them your support.

Patterson River Golf Club

Ray White, Chelsea

Longbeach RSL

Peninsula Pedallers,

Peter Murphy

Tania Ireton

Sonya Kilkenny

Corporate Edithvale Family And Children's Centre

Viridans Pty Ltd

Annual Subscription

\$15.00

Account name: Society Cheque Account

BSB: 063-118

Account number: 1005 9942

Committee Meetings are held 3rd  
Wednesday of each month generally at the  
Education Centre. Observers welcome.

### Committee 2024

President: Cathy Smith

Vice President; Robin Clarey

Secretary Margaret Hunter

Treasurer Hilary Bray

### Committee Members

Rosalie Cooper

Peter Murphy

Nola Pitman

Rex Chugg

Jaye Williams

(Julie Stephens)



**Friends of  
Edithvale – Seaford  
Wetlands Inc.**

If undeliverable please return to:

PO Box 2031

EDITHVALE 3196



PRINTED BY THE OFFICE OF

MARK DREYFUS, MHR FOR ISAACS